




LIBERTY
SAFE

ALWAYS PROTECTED™

LIBERTYSAFE.COM

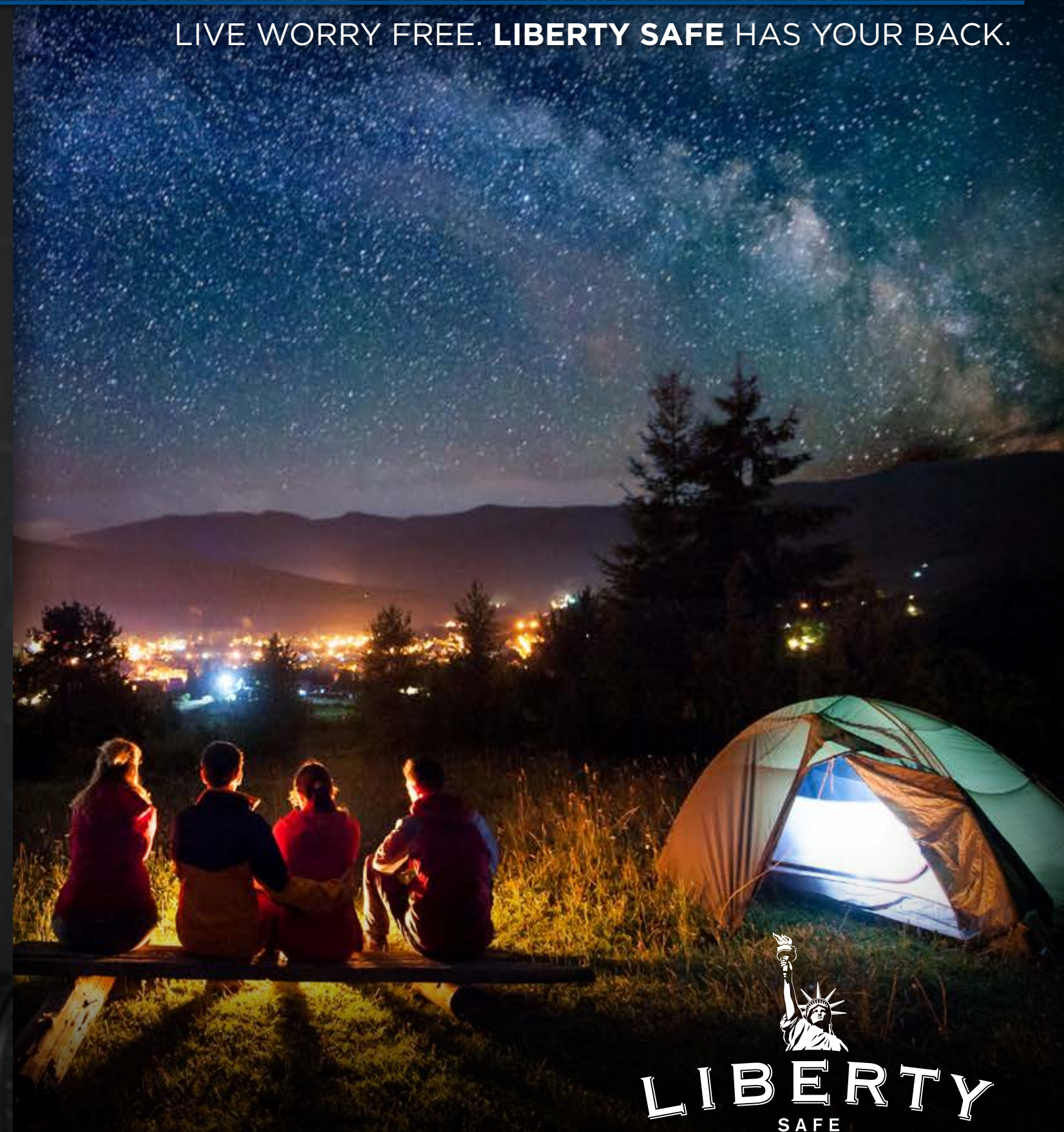
LIVE IN THE MOMENT

LIVE WORRY FREE. **LIBERTY SAFE** HAS YOUR BACK.

Whether you have jewelry, cash, or documents you want to protect from thieves and fire, or you want to keep your family safe by securing things like firearms and prescription medication, you can count on your Liberty Safe. With 30 years in the business and over 2 million safes sold, Liberty is America's #1 safe manufacturer.

So lock up your valuables and relax.

With Liberty Safe, you're ALWAYS PROTECTED.™




LIBERTY
SAFE

RESIDENTIAL SECURITY CONTAINER
Date:
Model:
SERIAL #:

THE NEWEST REVOLUTION IN SECURITY

LIBERTY'S EXCLUSIVE MILITARY STYLE LOCKING BARS ARE STRONGER.

LIBERTY LOCKING BARS

1. One Heavy-Duty Piece of Solid Steel

Liberty's heavy-duty locking bars eliminate weak points that fail during pry attacks.

2. 4x More Steel Surface Area

4x more steel engaging with the safe body (compared to 1" pins), which means your safe is harder to pry!

3. Longer Extension

Liberty's locking bars extend significantly longer than pins to make it much more difficult to pry past the safe body.



Actual Size



Actual Size

WATCH THE VIDEO!

LibertySafe.com/Pull

COMPETITORS' LOCKING PINS

Rivet attachment point on pins can bend during pry attacks!



The Proof Is in the Pull! Liberty Is 120% Stronger!

Liberty Safe engineers devised a pull test that accurately measured how much force it takes to pry open a safe door. You can see that Liberty outperforms other brands in this test against two comparably priced competitors' safes.



COMPETITOR SAFE #1

FAILED AT 6,900 LBS.



COMPETITOR SAFE #2

FAILED AT 9,100 LBS.




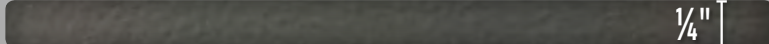


LIBERTY COLONIAL WITHSTOOD 15,300 LBS.!

120% STRONGER THAN COMP #1
59% STRONGER THAN COMP #2



WATCH ONLINE: LIBERTYSAFE.COM/PULL

Liberty Locking Bars Get Stronger As You Step Up!

	3/16"	CENTURION
	1/4"	USA, COLONIAL, PV20, PM 30, FATBOYS & FRANKLIN
	3/8"	LINCOLN, NATIONAL CLASSIC, & NATIONAL PLUS
	1/2"	PRESIDENTIAL & NATIONAL MAGNUM

4"

THE LIBERTY DIFFERENCE!

AMERICA'S BEST-BUILT SAFES

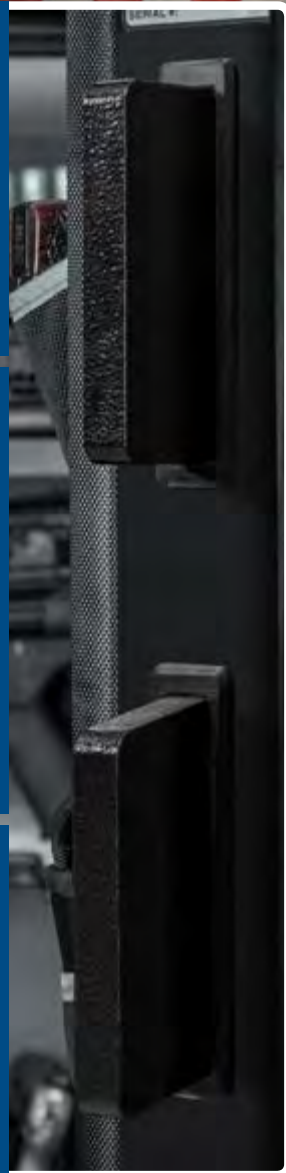
TORTURE TESTED. LIBERTY APPROVED.

THE STRONGEST DOORS

EXCLUSIVE 4-INCH MILITARY-STYLE LOCKING BARS increase your protection against pry-bar attacks.

HARDENED STEEL PLATES protect your lock from being drilled open by snapping or chewing up drill bits.

OUR TOUGH DOOR DESIGN makes our safes harder to pry and offers certified fire protection.



THE LATEST LOCK TECHNOLOGY

RELOCKING DEVICES both inside and outside the lock to thwart drilling, punching, or lock manipulation.

INDEPENDENT CERTIFICATION (UL listed) verifying the strength and security of all our locks: mechanical, electronic, and biometric.



THE TOUGHEST BODIES

REVOLUTIONARY 2-PIECE BODY DESIGN reduces the number of seams, welds, and weak points.

ROBOTIC WELDING for a stronger, more secure safe body.

THICKER STEEL for increased strength and fire resistance.



THE DYNAMITE CHALLENGE

We loaded a Liberty Fatboy and an equivalently-priced competitor safe with C1 explosives. Then we blew them up. The welds held on the Fatboy. The competitor? Not so much.



THE 200-FOOT FREEFALL

Ever wondered how a safe would hold up if you dropped another safe on it... from 200 feet in the air? Liberty clearly outperformed the competition.



THE CEMENT BLOCK DROP

What happens when you combine a 100-foot drop, a 1,000-pound block of cement, and a safe? A whole lotta fun, and a torture test that proves just how strong a Liberty Safe is.



TOUR THE FACTORY

LibertySafe.com/AmericanMade

WATCH THE VIDEOS

LibertySafe.com/TortureTests

PROVEN FIRE PROTECTION

Liberty Safes go head-to-head with California wildfires

"I don't know of another safe in this fire of a thousand plus homes that... fared as well as ours did."



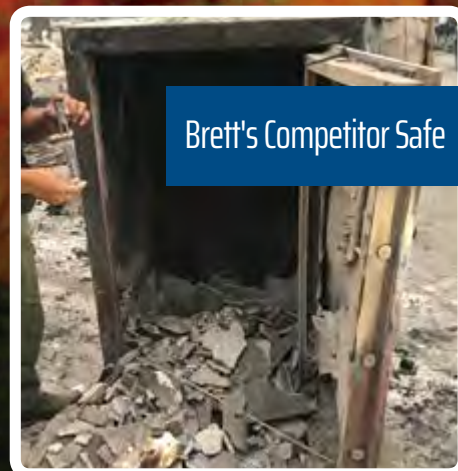
Luke's Liberty Safe



Luke's Valuables



Luke's Documents



Brett's Competitor Safe

"[I] saw a firetruck down the street and they're just saying, 'Get out now!'"



After being evacuated during 2017's California Atlas Fire, Scott returned home to find a heartbreaking site: his home was ashes, his 1969 Corvette was melted... everything he owned was destroyed.

Except for one thing: Scott's Presidential Liberty Safe was still standing. And all of his valuables—including the diamond from his grandmother's engagement ring and his fragile family photo albums—were in perfect condition.



The Carr fire tore through portions of California in 2018. Two friends both lost their homes to this devastating fire. Luke owned a Liberty Safe. Brett owned a competitor's safe.

Unfortunately, Brett's safe and all of its contents were completely destroyed. Luke's Liberty, on the other hand, was completely intact. His guns, pictures, important documents, jewelry, and even his kids' beloved Elf on a Shelf had been protected from the fire.

SEE THEIR STORY LibertySafe.com/CarrFire

SEE SCOTT'S STORY LibertySafe.com/AtlasFire



A LIBERTY SAFE FOR EVERY HOME

BUY BIGGER.
You'll Be Glad You Did!

WE ALWAYS HEAR, "I WISH I WOULD'VE BOUGHT A BIGGER SAFE!"

We don't mind if you buy two safes—a his and hers, or one upstairs and downstairs. But after 30 years of selling safes, our advice is simple:

BUY BIGGER—YOU'LL BE GLAD YOU DID.

NATIONAL SECURITY

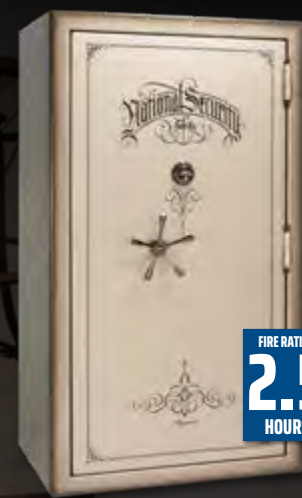
PRESIDENTIAL



FIRE RATING
2.5
HOURS

LEVEL 34 SECURITY

MAGNUM



FIRE RATING
2.5
HOURS

LEVEL 34 SECURITY

CLASSIC PLUS



FIRE RATING
110
MINUTES

LEVEL 28 SECURITY

CLASSIC SELECT



FIRE RATING
90
MINUTES

LEVEL 26 SECURITY

#1 LINCOLN SAFES

LINCOLN TRADITIONAL



FIRE RATING
90
MINUTES

LEVEL 26 SECURITY

MODERN LINCOLN



FIRE RATING
90
MINUTES

LEVEL 26 SECURITY

FRANKLIN / FATBOY



FIRE RATING
75
MINUTES

LEVEL 23 SECURITY

COLONIAL/FATBOY JR.



FIRE RATING
60
MINUTES

LEVEL 18 SECURITY

USA



FIRE RATING
40
MINUTES

LEVEL 15 SECURITY

CENTURION



FIRE RATING
30
MINUTES

LEVEL 8 SECURITY

PRESIDENTIAL SERIES

BEST OF THE BEST | MADE IN THE USA* | TOP OF THE LINE UPGRADES

The pinnacle of security, fire protection and style from Liberty Safe! Presidential safes boast several robust upgrades, including: 2.5 hour fire protection, top level-34 security, and myriad high-end style and functional upgrades. If you are looking for the best, you just found it!

SHOP ONLINE: LibertySafe.com/Presidential

SECURITY LEVEL

34

FIRE RATING

2 1/2

HOURS

STEEL THICKNESS

7

GAUGE

WEIGHS UP TO

1,585

POUNDS

UP TO 18 MILITARY
STYLE LOCKING BARS

1 1/2"

THICK STEEL BARS!

COLORS



OPTION



DURABLE WOODGRAIN VINYL SHELVES

MODELS

25 GUN CAPACITY: 22 LONG GUNS
EXTERIOR DIMENSIONS: 60.5" x 30" x 28.5"
INTERIOR DIMENSIONS: 53" x 23.5" x 14"
WEIGHT: 1,021 POUNDS

40 GUN CAPACITY: 33 LONG GUNS
EXTERIOR DIMENSIONS: 66.5" x 36" x 31.5"
INTERIOR DIMENSIONS: 59" x 30" x 16.5"
WEIGHT: 1,333 POUNDS

50 GUN CAPACITY: 39 LONG GUNS
EXTERIOR DIMENSIONS: 72.5" x 42" x 31.5"
INTERIOR DIMENSIONS: 65" x 36" x 16.5"
WEIGHT: 1,585 POUNDS

NATIONAL MAGNUM SERIES

WORLD-CLASS STYLE | MADE IN THE USA* | TOP-LEVEL SECURITY

Traditional styling with 5 variations from the Presidential makes the National Security Magnum legendary. External hinges for wider door swing, offset 5-spoke handle, and beautiful finishes give a nostalgic, authentic look. Tradition never goes out of style with Liberty's National Security safes.

SHOP ONLINE: LibertySafe.com/Magnum

SECURITY LEVEL

34

FIRE RATING

2 1/2

HOURS

STEEL THICKNESS

7

GAUGE

WEIGHS UP TO

1,585

POUNDS

UP TO 18 MILITARY
STYLE LOCKING BARS

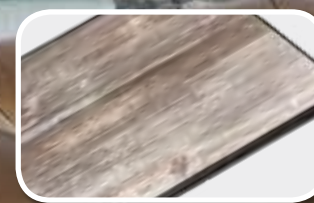
1 1/2"

THICK STEEL BARS!

COLORS



OPTION



DURABLE WOODGRAIN
VINYL SHELVES

MODELS



GUN CAPACITY: 22 LONG GUNS

25

EXTERIOR DIM. (H-W-D)
60.5" x 30" x 29"
INTERIOR DIM. (H-W-D)
53" x 23.5" x 14"

WEIGHT: 1,021 POUNDS



GUN CAPACITY: 33 LONG GUNS

40

EXTERIOR DIMENSIONS
66.5" x 36" x 32"
INTERIOR DIMENSIONS
59" x 30" x 16.5"

WEIGHT: 1,333 POUNDS



GUN CAPACITY: 39 LONG GUNS

50

EXTERIOR DIMENSIONS
72.5" x 42" x 32"
INTERIOR DIMENSIONS
65" x 36" x 16.5"

WEIGHT: 1,585 POUNDS



GLENN BECK
KEEPS GEORGE
WASHINGTON'S
COMPASS IN
HIS NATIONAL
SECURITY SAFE!

NATIONAL CLASSIC PLUS SERIES

ELEGANT DESIGN | MADE IN THE USA* | 2-STEP STEEL DOOR PLATE

The National Classic Plus Series is in a league of its own. The 2-step, 5" door includes a 3/8" solid steel door plate to give you added security and peace of mind. With 110 minutes of fire protection, level 28 security, and a plush interior with extra amenities, our National Classic Plus Series is among the classiest solid steel-door safes on the market!

SHOP ONLINE: LibertySafe.com/Plus

SECURITY LEVEL

28

FIRE RATING

110

MINUTES

STEEL THICKNESS

10

GAUGE

WEIGHS UP TO

1,410
POUNDS

UP TO 16 MILITARY
STYLE LOCKING BARS

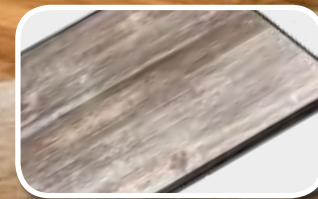
3/8"

THICK STEEL BARS!

COLORS



OPTION



DURABLE WOODGRAIN VINYL SHELVES

MODELS

25 GUN CAPACITY: 22 LONG GUNS
EXTERIOR DIMENSIONS: 60.5" x 30" x 29"
INTERIOR DIMENSIONS: 55" x 23.5" x 14"
WEIGHT: 900 POUNDS

40 GUN CAPACITY: 33 LONG GUNS
EXTERIOR DIMENSIONS: 66.5" x 36" x 32"
INTERIOR DIMENSIONS: 61" x 30" x 17"
WEIGHT: 1,185 POUNDS

50 GUN CAPACITY: 39 LONG GUNS
EXTERIOR DIMENSIONS: 72.5" x 42" x 32"
INTERIOR DIMENSIONS: 67" x 36" x 17"
WEIGHT: 1,410 POUNDS

NATIONAL CLASSIC SELECT SERIES

MAX GUN CAPACITY | MADE IN THE USA* | CUSTOMER FAVORITE

Built with the same great features as the Lincoln Series, plus some upgrades! Available in our beautiful gloss and marble finishes, these beauties are built tough with a 3/8" solid steel plate door for better pry resistance. Plus their external ball-bearing hinges offer a wider door swing, which allows for easier access. And with a larger interior on our Extreme model, our National Classic Selects protect more of what matters to you.

SHOP ONLINE: LibertySafe.com/Select



SECURITY LEVEL

26

FIRE RATING

90

MINUTES

STEEL THICKNESS

11

GAUGE

WEIGHS UP TO

1,525
POUNDS

UP TO 18 MILITARY
STYLE LOCKING BARS

3/8"

THICK STEEL BARS!

COLORS



MODELS



GUN CAPACITY: 24 LONG GUNS

25
EXTERIOR DIMENSIONS
60.5" * 30" * 28.5"
INTERIOR DIMENSIONS
55" * 23.5" * 15"

WEIGHT: 818 POUNDS



GUN CAPACITY: 35 LONG GUNS

40
EXTERIOR DIMENSIONS
66.5" * 36" * 32"
INTERIOR DIMENSIONS
61" * 31" * 18.5"

WEIGHT: 1,085 POUNDS



GUN CAPACITY: 41 LONG GUNS

50
EXTERIOR DIMENSIONS
72.5" * 42" * 32"
INTERIOR DIMENSIONS
67" * 37" * 18.5"

WEIGHT: 1,302 POUNDS



GUN CAPACITY: 72 LONG GUNS

60
EXTERIOR DIMENSIONS
72.5" * 50" * 32"
INTERIOR DIMENSIONS
67" * 45" * 18.5"

WEIGHT: 1,525 POUNDS

EXTREME UPGRADE: 10 GA. STEEL!
*THE 60 DOES NOT INCLUDE A JEWELRY DRAWER

LINCOLN SERIES

AMERICA'S #1 RATED SAFE | MADE IN THE USA* | 2 STYLE OPTIONS

The #1 rated safe in America by sportsmen and hunters coast to coast, the Lincoln now comes with more feature upgrades! They include the industry's best Clearview™ lighting system, extended 90-minute fire rating, velvet lined jewelry drawer, and more. Our Lincoln models have been ranked #1 by Predator Xtreme for 6 years running. And now they're available in two styles: modern and traditional!

SHOP ONLINE: LibertySafe.com/Lincoln

your life for it.
mes, this day
In its place is
ou have left
something good.



COLORS



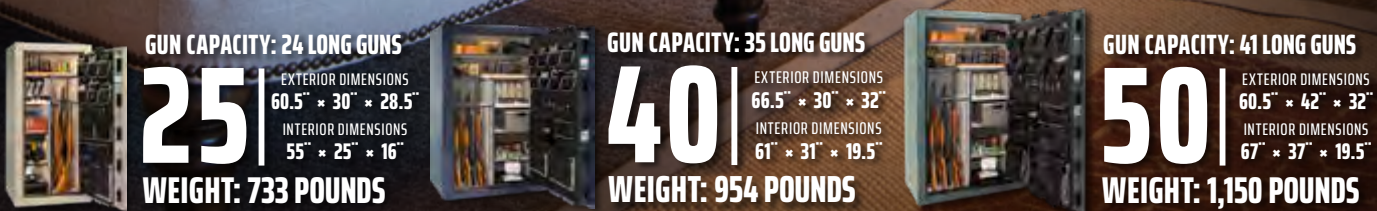
OPTIONS



LINCOLN TRADITIONAL
ALL COLORS

MODERN LINCOLN
GLOSS ONLY

MODELS



SECURITY LEVEL

26

FIRE RATING

90

MINUTES

STEEL THICKNESS

11

GAUGE

WEIGHS UP TO

1,150

POUNDS

UP TO 15 MILITARY
STYLE LOCKING BARS

3/8"

THICK STEEL BARS!

FRANKLIN SERIES

SECURITY & STYLE | MADE IN THE USA* | HIGH-QUALITY AFFORDABILITY

Our Franklin Series of fire-rated gun safes is packed with features and options. These safes feature 75-minute fire protection, an electrical outlet kit, interior lighting, as well as our "Tough Door" for a safe you can truly count on.

SHOP ONLINE: LibertySafe.com/Franklin

SECURITY LEVEL

23

FIRE RATING

75

MINUTES

STEEL THICKNESS

11

GAUGE

WEIGHS UP TO

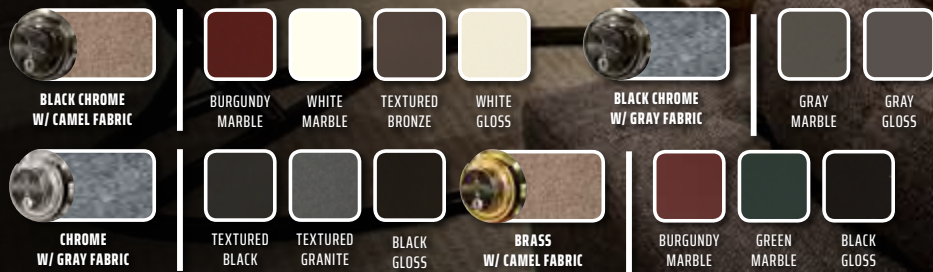
1,042
POUNDS

UP TO 15 MILITARY
STYLE LOCKING BARS

1/4"

THICK STEEL BARS!

COLORS



MODELS



FATBOY 64

MADE IN THE USA* | AMERICA'S #1 BIG GUN SAFE

Our Fatboys are our #1 best-selling big gun safes. With their large capacity (they hold up to 64 guns!), 11-gauge steel body, DX-90 Monster Mech lock, and space-optimizing gun racks, these safes let you store all your valuables.

SHOP ONLINE: LibertySafe.com/Fatboy

SECURITY LEVEL

23

FIRE RATING

75

MINUTES

STEEL THICKNESS

11

GAUGE

WEIGHS UP TO

914

POUNDS

12 MILITARY
STYLE LOCKING BARS

1 1/4"

THICK STEEL BARS!

COLORS



BLACK CHROME
W/ GRAY FABRIC



GRAY
MARBLE



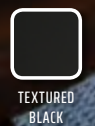
BLACK CHROME
W/ CAMEL FABRIC



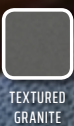
TEXTURED
BRONZE



CHROME
W/ GRAY FABRIC



TEXTURED
BLACK



TEXTURED
GRANITE

MODELS



GUN CAPACITY: 60 LONG GUNS

64

EXTERIOR DIMENSIONS
60.5" x 42" x 32"
INTERIOR DIMENSIONS
55" x 38" x 19"

WEIGHT: 896 POUNDS



GUN CAPACITY: 60 LONG GUNS

64

EXTERIOR DIMENSIONS
60.5" x 42" x 32"
INTERIOR DIMENSIONS
55" x 38" x 19"

WEIGHT: 914 POUNDS

EXTREME

*Made in the USA with U.S. and Global Parts

FATBOY JR. 48

MADE IN THE USA* | HIGH CAPACITY GUN SAFE

If you're looking for a big, stylish safe that holds a lot of stuff at a great price, the Fatboy Jr. is the perfect choice. For the size and price, our Fatboy Jr. is the toughest safe on the market.

SHOP ONLINE: LibertySafe.com/Fatboyjr

SECURITY LEVEL

18

FIRE RATING

60

MINUTES

STEEL THICKNESS

11

GAUGE

WEIGHS UP TO

787

POUNDS

8 MILITARY
STYLE LOCKING BARS

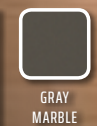
1 1/4"

THICK STEEL BARS!

COLORS



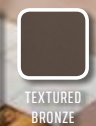
BLACK CHROME
W/ GRAY FABRIC



GRAY
MARBLE



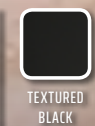
BLACK CHROME
W/ CAMEL FABRIC



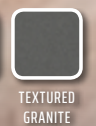
TEXTURED
BRONZE



CHROME
W/ GRAY FABRIC



TEXTURED
BLACK



TEXTURED
GRANITE

MODELS



GUN CAPACITY: 45 LONG GUNS

48

EXTERIOR DIMENSIONS
60.5" x 42" x 25"
INTERIOR DIMENSIONS
56.5" x 38" x 14"

WEIGHT: 777 POUNDS



GUN CAPACITY: 45 LONG GUNS

48

EXTERIOR DIMENSIONS
60.5" x 42" x 25"
INTERIOR DIMENSIONS
56.5" x 38" x 14"

WEIGHT: 787 POUNDS

EXTREME

*Made in the USA with U.S. and Global Parts

COLONIAL SERIES

EXCELLENT VALUE | MADE IN THE USA* | 11 COLOR CHOICES AVAILABLE

Our Colonial safes offer 50% more fire protection than competitor safes at the same price. With a 60-minute fire rating, specialized door storage panel, active locking bars (even on the back side of the door), our upgraded S&G Group II lock, and the ability to hold anywhere from 25-64 long guns depending on the model you choose, the Colonial gives you amazing value for your money.

SHOP ONLINE: LibertySafe.com/Colonial



SECURITY LEVEL

18

FIRE RATING

60

MINUTES

STEEL THICKNESS

11

GAUGE

WEIGHS UP TO

1,028
POUNDS

UP TO 10 MILITARY
STYLE LOCKING BARS

1 1/4"

THICK STEEL BARS!

COLORS



MODELS



GUN CAPACITY: 25 LONG GUNS

23

EXTERIOR DIMENSIONS
60.5" x 30" x 26.5"
INTERIOR DIMENSIONS
57" x 26" x 14"

WEIGHT: 615 POUNDS



GUN CAPACITY: 30 LONG GUNS

30

EXTERIOR DIMENSIONS
60.5" x 36" x 26.5"
INTERIOR DIMENSIONS
57" x 32" x 14"

WEIGHT: 689 POUNDS



GUN CAPACITY: 64 LONG GUNS

50

EXTERIOR DIMENSIONS
72.5" x 42" x 32"
INTERIOR DIMENSIONS
69" x 38" x 20"

WEIGHT: 1,002 POUNDS



GUN CAPACITY: 60 LONG GUNS

50

EXTERIOR DIMENSIONS
72.5" x 42" x 32"
INTERIOR DIMENSIONS
69" x 38" x 20"

WEIGHT: 1,028 POUNDS

USA SERIES

TOP ENTRY-LEVEL SAFE | MADE IN THE USA*

If you're looking for the ultimate entry-level safe that's anything but basic, our USA Series gives you Liberty security at an affordable price.

SHOP ONLINE: LibertySafe.com/USA

SECURITY LEVEL

8

FIRE RATING

40

MINUTES

STEEL THICKNESS

12

GAUGE

WEIGHS UP TO

646

POUNDS

6 MILITARY STYLE
LOCKING BARS

1 1/4"

THICK STEEL BARS!

COLORS



CHROME
W/ GRAY FABRIC



TEXTURED
BLACK



MECHANICAL
LOCK OPTION

MODELS



GUN CAPACITY: 25 LONG GUNS

23

EXTERIOR DIMENSIONS
60.5" * 30" * 25"
INTERIOR DIMENSIONS
57.5" * 28" * 15.5"

WEIGHT: 508 POUNDS



GUN CAPACITY: 30 LONG GUNS

30

EXTERIOR DIMENSIONS
60.5" * 36" * 25"
INTERIOR DIMENSIONS
57.4" * 34" * 15.5"

WEIGHT: 564 POUNDS



GUN CAPACITY: 48 LONG GUNS

48

EXTERIOR DIMENSIONS
60.5" * 42" * 25"
INTERIOR DIMENSIONS
57.5" * 40" * 15.5"

WEIGHT: 646 POUNDS

CENTURION SERIES

THE PERFECT FIRST SAFE | MADE IN THE USA*

A favorite among first-time safe owners and shoppers who want trusted security on a budget, our Centurion Series is a top seller. Tough, stylish, and affordable, the Centurion gets the job done.

SHOP ONLINE: LibertySafe.com/Centurion



SECURITY LEVEL

8

FIRE RATING

30

MINUTES

STEEL THICKNESS

14

GAUGE

WEIGHS UP TO

375

POUNDS

5 MILITARY STYLE
LOCKING BARS

3/16"

THICK STEEL BARS!

COLORS



BLACK
W/ GRAY FABRIC



TEXTURED
BLACK



TOPLIT LOCK
OPTION

MODELS

12 | GUN CAPACITY: 12 LONG GUNS
EXTERIOR DIMENSIONS: 59.5" x 18.25" x 18"
INTERIOR DIMENSIONS: 56" x 16.25" x 10"
WEIGHT: 245 POUNDS

18 | GUN CAPACITY: 18 LONG GUNS
EXTERIOR DIMENSIONS: 59.5" x 24.25" x 22"
INTERIOR DIMENSIONS: 56" x 22.25" x 13.5"
WEIGHT: 340 POUNDS

24 | GUN CAPACITY: 24 LONG GUNS
EXTERIOR DIMENSIONS: 59.5" x 28.25" x 22"
INTERIOR DIMENSIONS: 56" x 26.25" x 13.5"
WEIGHT: 375 POUNDS

PREMIUM 20

COMPACT DESIGN | MADE IN THE USA*

Designed to fit inside a 24 inch-deep closet, our compact Premium 20 safe includes deluxe security features, a fully customizable interior, and a 75-minute fire rating.

SHOP ONLINE: LibertySafe.com/Premium20



SECURITY LEVEL

21

FIRE RATING

75

MINUTES

STEEL THICKNESS

12

GAUGE

WEIGHS

584

POUNDS

6 MILITARY STYLE
LOCKING BARS

1/4"

THICK STEEL BARS!

COLORS



BLACK/BLACK CHROME
W/ GRAY FABRIC



GRAY
MARBLE



MECHANICAL
LOCK OPTION

MODELS

20 | GUN CAPACITY: 20 LONG GUNS
EXTERIOR DIMENSIONS: 60.5" x 28" x 22"
INTERIOR DIMENSIONS: 56" x 23" x 12"
WEIGHT: 584 POUNDS

*Made in the USA with U.S. and Global Parts

*Made in the USA with U.S. and Global Parts

PRIVATE 20

ULTRA-COMPACT DESIGN | MADE IN THE USA*

Our new Private 20 can hold up to 20 long guns and contains our Palusol heat-expanding door seal, specialized steel plates to protect the lock from being drilled into, and Liberty's patent-pending military-style locking bars.

SHOP ONLINE: LibertySafe.com/Private20

SECURITY LEVEL

15

FIRE RATING

30

MINUTES

STEEL THICKNESS

12

GAUGE

WEIGHS

464

POUNDS

6 MILITARY STYLE
LOCKING BARS

1/4"

THICK STEEL BARS!

COLORS



BLACK
W/ GRAY FABRIC



PV20 ONLY
TEXTURED
BLACK



TOPLIT LOCK
OPTION



BLACK CHROME
W/ SILVER VELOUR



PV20 PLUS
ONLY
GRAY
MARBLE



BACKLIT LOCK
OPTION

MODELS



GUN CAPACITY: 20 LONG GUNS

20

EXTERIOR DIMENSIONS
60.5" x 28" x 22"
INTERIOR DIMENSIONS
57" x 26" x 13.5"
WEIGHT: 464 POUNDS



PV20 PLUS GUN CAPACITY: 20 LONG GUNS

20

EXTERIOR DIMENSIONS
60.5" x 28" x 22"
INTERIOR DIMENSIONS
57" x 26" x 13.5"
WEIGHT: 464 POUNDS

PLUS MODEL UPGRADE

- Gray Marble Finish
- Point Handle
- SGG Key Locking Dial

*Made in the USA with U.S. and Global Parts

TACTICAL 24

QUICK-ACCESS SAFE | MADE IN THE USA*

This safe was engineered with tactical experts in mind. It comes with our Dual-Flex Tactical interior and adjustable Quick Release Rifle Holder for instant access to your response gear.

SHOP ONLINE: LibertySafe.com/Tactical24

SECURITY LEVEL

8

FIRE RATING

30

MINUTES

STEEL THICKNESS

14

GAUGE

WEIGHS

410

POUNDS

10 MILITARY STYLE
LOCKING BARS

3/16"

THICK STEEL BARS!

COLORS



BLACK
W/ GRAY FABRIC



TEXTURED
BLACK

MODELS



GUN CAPACITY: 20 LONG GUNS

20

EXTERIOR DIMENSIONS
59.5" x 28.25" x 22"
INTERIOR DIMENSIONS
56" x 26.25" x 13.5"
WEIGHT: 410 POUNDS

*Made in the USA with U.S. and Global Parts

PREMIUM HOME

LOW-PROFILE DESIGN | HIGH-QUALITY SECURITY

Our Liberty Premium Home Safes offer serious protection in a size that fits into any home. They give you 90 minutes of fire protection, an 11-gauge steel body, and specialized defense technology to protect against lock-drilling.

SHOP ONLINE: LibertySafe.com/PremiumHome



COLORS



BLACK CHROME
W/ SILVER VELOUR



GRAY
MARBLE

MODELS

05 | EXTERIOR DIMENSIONS: 24" x 24" x 22.5"
INTERIOR DIMENSIONS: 20" x 19.5" x 13"
WEIGHT: 265 POUNDS

08 | EXTERIOR DIMENSIONS: 30" x 24" x 22.5"
INTERIOR DIMENSIONS: 23.5" x 19.5" x 12"
WEIGHT: 325 POUNDS

12 | EXTERIOR DIMENSIONS: 42" x 24" x 22.5"
INTERIOR DIMENSIONS: 35.5" x 19.5" x 12"
WEIGHT: 420 POUNDS

17 | EXTERIOR DIMENSIONS: 59" x 24" x 22.5"
INTERIOR DIMENSIONS: 52.5" x 19.5" x 12"
WEIGHT: 560 POUNDS

SECURITY LEVEL
21

FIRE RATING
90
MINUTES

STEEL THICKNESS
11
GAUGE

WEIGHS UP TO
560
POUNDS

UP TO
14
LOCKING BOLTS

HOME SAFES

THE PERFECT HOME FIRE SAFE | SECURE AND AFFORDABLE

This series allows you to protect your documents, jewelry, handguns, and collectibles against fire and theft at an affordable price. You get a 60-minute fire rating, a quick-access backlit electronic lock, and added protection against attempted lock drilling and pounding.

SHOP ONLINE: LibertySafe.com/HomeSafes



COLORS



CHROME
W/ GRAY FABRIC



TEXTURED
BLACK

MODELS

08 | EXTERIOR DIMENSIONS: 30" x 24.25" x 22"
INTERIOR DIMENSIONS: 26" x 19.5" x 13.5"
WEIGHT: 290 POUNDS

12 | EXTERIOR DIMENSIONS: 42" x 24.25" x 22"
INTERIOR DIMENSIONS: 38" x 19.5" x 13.5"
WEIGHT: 375 POUNDS

17 | EXTERIOR DIMENSIONS: 59" x 24" x 22.5"
INTERIOR DIMENSIONS: 55" x 19.5" x 13.25"
WEIGHT: 500 POUNDS

SECURITY LEVEL
13

FIRE RATING
60
MINUTES

STEEL THICKNESS
12
GAUGE

WEIGHS UP TO
500
POUNDS

UP TO
11
LOCKING BOLTS

NEW VAULT DOORS

THE ULTIMATE IN HOME SECURITY

SHOP ONLINE: LibertySafe.com/VaultDoors



GRAY MARBLE
VAULT DOOR



TEXTURED BLACK
VAULT DOOR

If you're looking for premium home security, you need our latest innovation—Liberty Safe Vault Doors. These high-security, solid steel doors offer two very important benefits:

1. You can store a large collection of valuables behind them.
2. You can use them to create a safe room for your family.

Your firearms, collectibles, antiques, important paperwork, jewelry, emergency preparedness items, family heirlooms... all of it can be secured behind your Liberty Safe vault door.

These premium safe rooms can also double as a spot for your family to escape to should you experience the unthinkable, like a home invasion. Secure your valuables and give yourself added peace of mind by creating your very own safe room with a Liberty Safe vault door.

VAULT DOOR FEATURES & SPECIFICATIONS

- Easy installation
- Expanding fire seal on all sides
- 18 heavy-duty, solid-steel locking bars
- Third-party certified (UL-listed) external lock
- Internal lockout mechanism to prevent the door from being opened on the outside
- Internal door release mechanism
- Available in black or gray marble finish
- **Shipping Weight:** 1,245 pounds
- **Door Dimensions:** 34" wide × 79" tall
- **Frame Dimensions:** 45.25" wide × 85.75" tall
- **Frame Steel:** 7 gauge
- **Door Steel:** ¼" laminate 12-gauge composite fire door with ¼" steel door plate



FULL SPECS & INSTALLATION INSTRUCTIONS ONLINE:

LibertySafe.com/VaultDoors

COMPACT VAULTS

PERSONAL STORAGE SOLUTION | QUICK-ACCESS VAULTS

SHOP ONLINE: LibertySafe.com/CompactVault

HDX MODELS – 5 YEAR WARRANTY

HDX-150 SMART VAULT



With Liberty's 5th-generation biometric finger swipe technology, you can access your handgun or other valuables in under 2 seconds. Comes with key backup, interior lights and cable lock.

HDX-250 SMART VAULT



Our larger HDX-250 auto opens in the front. It can easily be placed under your bed, in your closet, or in a drawer, and it can be bolted down for increased security. It comes with an AC adapter.

HDX-350 SMART VAULT



Liberty's HDX-350 is the finest Compact Vault in the industry. It includes multi-directional finger swipe technology, soft-landing door, AC adapter, multiple USB charging ports, slide-out drawer, and lighted interior.

HD MODELS – 2 YEAR WARRANTY

HD-200 QUICK VAULT

The HD-200 has been designed with an auto-opening angled front door to provide great visibility and easy access to your firearm or valuables. Liberty engineers added multiple tamper-resistant designs to resist prying. 9v battery and key back included. 2-year warranty.

HD-300 QUICK VAULT

Liberty's HD-300 has all of the same features as the HD-200 but is 50% larger. It has the same angled front door for greater visibility. An extra interior shelf adds to the HD-300 storage capacity. Mounting holes are included for securing vault to floor or furniture. Foam lined and includes key back-up.

HD-50 KEY VAULT

Liberty's most compact and affordable handgun vault with top-opening access. Foam lined to protect handguns or other valuables. Includes two cylinder keys and security cable for tie down capability!

HD-90 KEY VAULT

Economically priced and conveniently portable, the HD-90 Key Vault is one tough vault that you can take it on the go, and with its low-profile 2.5" height it even fits under automobile seats. Foam lined to protect guns. Two access keys and cable lock included.

HD-100 QUICK VAULT

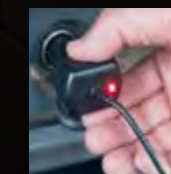
Liberty's HD-100 is the first in its Quick Combo Series that includes a touch pad with back up key access. Easy press buttons with piston-assisted top-opening door for quick access. Interior light, foam lined, 9v battery, and cable lock included.

ACCESSORIES



AC ADAPTER

Power your HDX-150 with AC for quicker access to valuables. 12592



DC ADAPTER

Power your Compact Vault in your vehicle! Compatible with the HDX-150, 250, 350. 14989



MOUNTING BRACKET

Secure your vault to solid surfaces for extra security. Works with HDX-250 and 350, HD-200 & 300. 12591

MAGNETIC GUN CASES

COMPLIANT IN ALL 50 STATES FOR TRAVEL AND STORAGE

SHOP ONLINE: LibertySafe.com/GunCases



- Firearms won't fall out or slide around!
- Works with polymer-framed pistols
- Soft velvet-lined interior protects guns
- Metal grommet works with optional cable lock

INTEGRATED LOCKING ZIPPER
Compliant in ALL 50 States for travel and storage! Check your local CCW laws



30" RETRACTABLE CABLE LOCK
Securely attach your magnetic handgun case to desks, furniture, vehicles and more! Optional Accessory LIB#: 14930



MAGNETIC SEALING HANDGUN CASES



FULL SIZE

9" x 12" HANDGUN CASE

140 SEALING MAGNETS!

Perfect for transporting your handguns securely and in style. Keep your firearms from sliding around or falling out.

Black Leather MI-B LIB#: 14923

Nylon M3-B LIB#: 14921



COMPACT

8" x 11" HANDGUN CASE

108 SEALING MAGNETS!

All cases work with polymer framed pistols, and are light, durable, and very portable. Use the integrated locking zipper, or leave readily accessible.

Black Leather MI-A LIB#: 14922

Nylon M3-A LIB#: 14920



SUB-COMPACT

6" x 8" HANDGUN CASE

56 SEALING MAGNETS!

For the smaller handguns, the Sub-Compact version is ideal—56 sealing magnets with the standard integrated zipper and metal grommet for added security.

Brown Leather MI-C LIB#: 14924

MAGNETIC LOCKING COMBO GUN CASES



42" CASE

RIFLE / HANDGUN CASE

Two detachable handgun cases. Dual storage zipper pockets. Overall W x H: 43" x 14"

Available in tactical black and flat dark earth.

BLACK-LIB#: 14925

FDE-LIB#: 14928



36" CASE

RIFLE / HANDGUN CASE

Two detachable handgun cases. Dual storage zipper pockets. Overall W x H: 37" x 14"

Available in tactical black and flat dark earth.

BLACK-LIB#: 14926

FDE-LIB#: 14929



28" CASE

RIFLE / HANDGUN CASE

One detachable handgun case. Dual storage zipper pockets. Overall W x H: 29" x 12"

Available in tactical black.

LIB#: 14927



MAGNETIC DETACHABLE HANDGUN CASE



PADDED SHOULDER STRAP AND ID POCKET



INTERNAL DIVIDER / SHOOTER'S PAD



SECURITY ADD-ONS

AND HIGH-TECH ACCESSORIES

SHOP ONLINE: LibertySafe.com/Accessories

POWER OUTLET KIT

Easily add power to most safes built after April 2014. Safes built between April 2007 & April 2014 require extra installation procedures. (see videos at LibertySafe.com) Includes USB, standard outlets, ethernet plug, SafEAlert antenna pass-through and installation hardware. Standard on all Franklin safes and above. 11015-001



BEST SECURITY ADD-ONS!



ANCHORING KITS (BEST SECURITY ADD-ON)

Secure your safe to the floor. Utilizes the pre-drilled holes in the floor of your Liberty Safe. Kits are sold separately for concrete or wood floors. Installation and tools required.



DANGER! BLACK POWDER ENCLOSED-STICKER

Discourage thieves from torching or cutting your safe, increasing protection of valuables. 10462

LIGHT UP YOUR VALUABLES

CLEARVIEW™ SAFE LIGHTS (5 OR 6 WAND)

Illuminate your safe with bright LED lights. Auto on/off motion sensor. Lights stay cool during operation. Factory installed on PX, NS, CL and LX Models. 5 Wand Kit-10792, 6 Wand Kit-10793

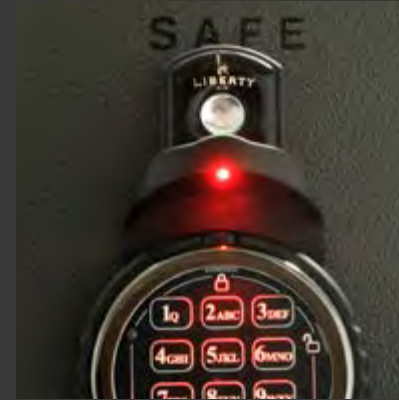


BRIGHTVIEW™ SAFE LIGHTS (2 WANDS)

Brighten your safe's interior with Liberty's Brightview™ light kit. Auto on/off light activated motion sensor to extend battery life. Installation required. Kit included on Franklin, FATBOY and Premium 20 Safes. 10981

SAFE SECURITY LIGHTS

- Push-Button Operation
- Red LED Lighting Source
- Two-Minute Lighting Cycle
- Simple Magnetic Attachment
- 3V Lithium Battery (included)
- 750+ Lighting Cycles/Battery



For E-locks-10930, Mech. Locks-10929



TACTICAL J5 V1-PRO FLASHLIGHT

This small but intense supercharged LED flashlight can sweep light over an entire football field. Adjustable focus range, 3 modes of use, and amazing performance on a single AA battery. 14766

HIGH-SECURITY ELECTRONIC LOCKS



SAFELOGIC TOPLIT E-LOCK*

NEW! UL Listed (Type 1) motor driven E-Lock with toplit red LED night vision light with 1 user code. Available in Chrome and Black. Factory Installed on USA. Optional on CN.



SAFELOGIC BACKLIT E-LOCK*

NEW! UL Listed (Type 1) motor driven E-Lock with backlit keypad with 1 programmable user code. Available in Brushed Chrome, Black Chrome and Brass. Optional on CO and FB jr.



PROLOGIC L01 E-LOCK*

NEW! UL Listed (Type 1) motor driven E-Lock with LCD lighted screen and 2 programmable user codes. Available in Brushed Chrome, Black Chrome and Brass. Optional on FR, FB, LX, CL, CP, NS, and PX.

STORAGE SOLUTIONS

AND MORE ACCESSORIES

SHOP ONLINE:

LibertySafe.com/Accessories



DOOR PANEL SIZES

- 10583 Centurion 12 Gun Import (Internal Hinge Model)
- 10583A USA Centurion 12 Gun (External Hinge Model)
- 10584 Model 18
- 10585 Models 20-25
- 10586 Models 30/35/40
- 10587 Models 48/64
- 10588 Model 50

EXTRA COOL POCKET®

Portable! Stays 50° cooler during a fire when placed in a fire safe. Sold Separately 10597



QUICK ACCESS TO HANDGUNS & RIFLES!

					
OAK PISTOL RACK Beige-2414-001, Silver-2414-002	4-GUN PISTOL RACK 10956	HANDGUN HANGERS OVER/UNDER (2 Pack) 10822	HANDGUN HANGERS UNDER SHELF (4 Pack) 10817	HANDGUN HANGERS BACK/OVER (2 Pack) 10921	HANDGUN HANGERS BACK UNDER (2 Pack) 13666



RIFLE RODS STORAGE

Create more storage space instantly with Gun Storage Solutions long gun storage rod kits. Keep your collection neatly stored for quick and easy access.

RIFLE ROD KITS:

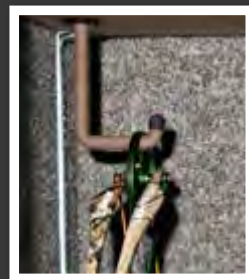
- Starter Kit - 20 Pack Rifle-10821
- Starter Kit - 10 Pack-10820
- Add-Ons - 6 Pack-10819
- Add-Ons 17 Cal - 2 Pack-10818



MAGNET GUN CADDY

Flexible, works with most guns! Won't scratch paint or barrels. Single gun design for infinite placement on any metal surface. Patented design actively holds the barrel. 2-Pack 14550

STORAGE ADD-ONS



BOW HANGER

Secure and protect expensive bows and arrows with Liberty's Bow Hanger. Easy to install under any shelf. 11013



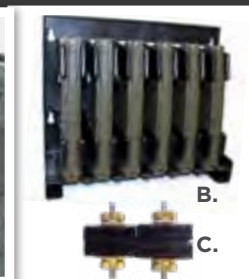
MULTI-MAG

Four magnets designed to hold metal magazines and handguns. Rubber coated to help protect items. 13037



MAGMOUNT & AR15 MAGSTORAGE

Organize gun magazines in your gun safe—on the door, or side walls! A. Magmount-10958
B. AR15 Magstorage-13007
C. AR15 Magstorage Magnets-13596



JEWELRY DRAWER

Jewelry drawer mounts under safe's adjustable shelves. One jewelry drawer in PX, NS, CL and LX safes, two in CT20. 3.75" tall drawers in four widths: 6.5"-10486A, 8.5"-10253A, 11.5"-10254A, 15"-10255A

KEEP YOUR VALUABLES DRY

A & B: Gently raises the temperature inside your safe (lowering relative humidity) to protect your valuables. 110-v outlet required.
C, D, E, F: Absorb unwanted moisture inside the safe. **Plug-in Dry Out Models: C Oven Dry Out Models: D, E, F**



A PEET® DRYER DEHUMIDIFIER 10497



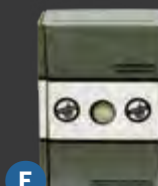
B ELECTRIC ROD DEHUMIDIFIER 12"-9913 18"-10872



C EVA-DRY 9993



D 750 g DESICCANT CAN 2412

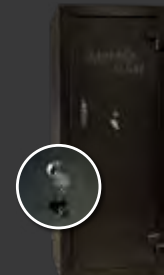


E 450 g DESICCANT BOX 10826



F 40 g DESICCANT MINI-CAN 10825

SPECIALIZED STORAGE OPTIONS



AMMO CAN

Safely store your ammo in Liberty's new Ammo Can! Quick key lock access. 5-Year Limited Warranty. Dimensions: 59.5" x 24.25" x 22" Each Shelf Section: 13.5" x 22.25" x 13.5" Weight: 270 lbs. 18-000-00B



SAFE COVERS

Liberty's safe covers protect your safe, while keeping it concealed from sight. Dual zippers for quick & easy access. 20-25 Size: 13917
30-35 Size: 13918
48 Size: 13919
64 Size: 13921
50 Size: 13920



AMMO CANISTERS

Protects ammo & other valuables in a secure, water tight container. Built to military specs with LIBERTY insignia. .30 CAL 10933-30
.50 CAL 10933-50



LIBERTY GEAR

Show off your great taste in safes with this adjustable Liberty ball cap. Get yours at LibertySafe.com/Gear 15330



LIBERTY SAFE SPECS BY MODEL



SECURITY SPECIFICATIONS

SECURITY LEVEL	LEVEL 34	LEVEL 28	LEVEL 26	LEVEL 26	LEVEL 23	LEVEL 23	LEVEL 18	LEVEL 18	LEVEL 8	LEVEL 21	LEVEL 15	LEVEL 8
U.L. LISTED	✓	✓	✓	✓	✓	✓	✓	✓	✓	✓	✓	—
DOOR SPECS	1.25"/1" Composite Door 1/4" Inner Steel Door Plate	3/8" Solid Steel Door Plate 5" Thick 2-Step Door	3/8" Solid Steel Door Plate 12 Ga. Steel Inner Door Plate	1" Tough Door 12 Ga. Steel Inner Door Plate	1" Tough Door 12 Ga. Steel Inner Door Plate	1" Tough Door 12 Ga. Steel Inner Door Plate	1" Composite Door	1" Composite Door	1" Composite Door	1" Composite Door	1" Composite Door	7/8" Composite Door
LOCKING BARS / SIDES	4 Sides-1/2" Bars Up to 18 Locking Bars	4 Sides-3/8" Bars Up to 16 Locking Bars	4 Sides-3/8" Bars Up to 18 Locking Bars	4 Sides-3/8" Bars Up to 15 Locking Bars	4 Sides-1/4" Bars Up to 15 Locking Bars	4 Sides-1/4" Bars Up to 12 Locking Bars	4 Sides-1/4" Bars Up to 10 Locking Bars	4 Sides-1/4" Bars Up to 14 Locking Bars	2 Sides-1/4" Bars Up to 10 Locking Bars	2 Sides-1/4" Bars 6 Locking Bars	2 Sides-1/4" Bars 6 Locking Bars	2 Sides-3/16" Bars 10 Locking Bars
STEEL THICKNESS	7 Ga. 3-Piece	10 Ga. 3-Piece	11 Ga. 2-Piece	11 Ga. 2-Piece	11 Ga. 2-Piece	11 Ga. 2-Piece	11 Ga. 2-Piece	11 Ga. 2-Piece	12 Ga. 2-Piece	12 Ga. 2-Piece	12 Ga. 2-Piece	14 Ga. 2-Piece
STANDARD LOCK	UL Listed Mechanical	UL Listed Mechanical	UL Listed Mechanical	UL Listed Mechanical	UL Listed Mechanical	UL Listed Mechanical	UL Listed Mechanical	UL Listed Mechanical	SecuRam Toplit E-lock	SecuRam ProLogic	UL Listed Mechanical	UL Listed Mechanical
LOCK OPTION	SecuRam ProLogic	SecuRam ProLogic	SecuRam ProLogic	SecuRam ProLogic	SecuRam ProLogic	SecuRam ProLogic	SecuRam Backlit E-lock	SecuRam Backlit E-lock	UL Listed Mechanical	UL Listed Mechanical	SecuRam Toplit E-lock/ SecuRam Backlit E-lock (Plus)	SecuRam Toplit E-lock
EXTERNAL RELOCKER	✓	✓	✓	✓	✓	✓	✓	✓	✓	✓	✓	✓
HARDPLATE LOCK PROTECTION	Ball-Bearing	Ball-Bearing	Ball-Bearing	Ball-Bearing	Triple Hardplate	Triple Hardplate	Triple Hardplate	Triple Hardplate	Triple Hardplate	Triple Hardplate	Triple Hardplate	Single Hardplate
LOCKING MECHANISM TYPE	GX-480/540 Monster Mech Gear Driven	DX-90 Monster Mech Over Center Cam	DX-90 Monster Mech Over Center Cam	DX-90 Monster Mech Over Center Cam	DX-90 Monster Mech Over Center Cam	DX-90 Monster Mech Over Center Cam	X-Cam Mech	X-Cam Mech	X-Cam Mech	X-Cam Mech	X-Cam Mech	Direct Cam Mech

FIRE SPECIFICATIONS

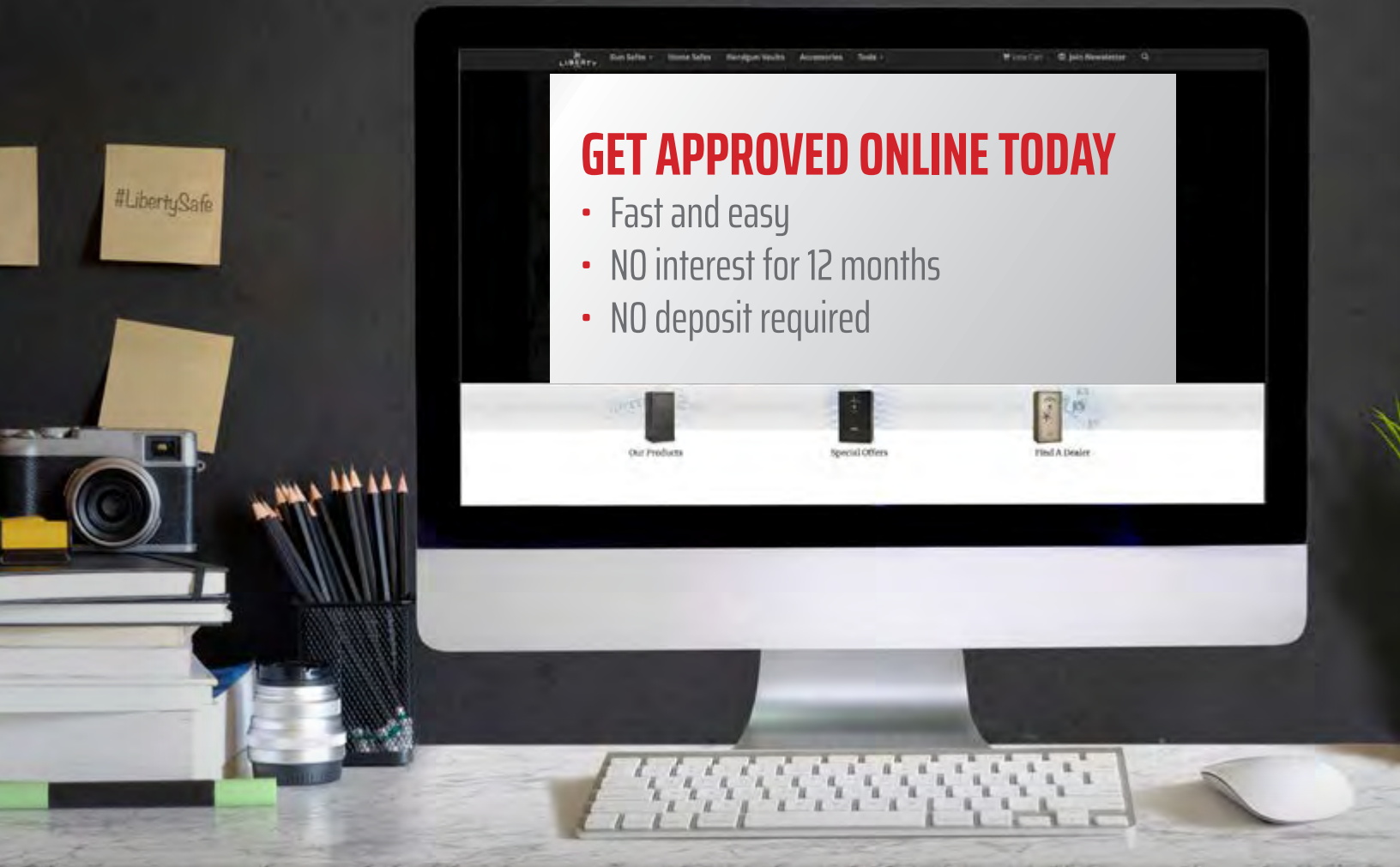
FIRE RATING	2.5 HOURS @ 1200 °	110 Minutes @ 1200 °	90 Minutes @ 1200 °	90 Minutes @ 1200 °	75 Minutes @ 1200 °	75 Minutes @ 1200 °	60 Minutes @ 1200 °	60 Minutes @ 1200 °	40 Minutes @ 1200 °	75 Minutes @ 1200 °	30 Minutes @ 1200 °	30 Minutes @ 1200 °
BTU	131,000	107,000	95,000	95,000	86,000	86,000	83,000	83,000	68,000	92,000	62,000	62,000
FIREBOARD LAYERS	4 Layers in Ceiling, Walls, Door, & Door Jamb	4 Layers in Ceiling & Door, 3 in Walls & Door Jamb	4 Layers in Ceiling, 3 in Walls, Door, & Door Jamb	4 Layers in Ceiling, 3 in Walls, Door, & Door Jamb	4 Layers in Ceiling, 2 in Walls, 3 in Door & Door Jamb	4 Layers in Ceiling, 2 in Walls, 3 in Door & Door Jamb	3 Layers in Ceiling, 2 in Walls, 3 in Door & Door Jamb	3 Layers in Ceiling, 2 in Walls, 3 in Door & Door Jamb	2 Layers in Ceiling, 1 in Walls & Door Jamb, 2 in Door	4 Layers in Ceiling, 3 in Walls, Door Jamb, & Door	2 Layers in Ceiling & Door, 1 in Walls & Door Jamb	3 Layers in Ceiling, 1 in Walls & Door Jamb, 3 in Door
DOOR SEAL	Expanding V-Seal Palusol™	Double Expanding Palusol™	Expanding V-Seal Palusol™	Expanding V-Seal Palusol™	Expanding V-Seal Palusol™	Expanding V-Seal Palusol™	Expanding Palusol™	Expanding Palusol™	Expanding Palusol™	Expanding Palusol™	Expanding Palusol™	Expanding Palusol™

STYLE & FUNCTIONALITY

UPHOLSTERY TYPE	Pin-Dot Velour	Pin-Dot Velour	Pin-Dot Velour	Pin-Dot Velour	Foss Fabric	Foss Fabric	Foss Fabric	Foss Fabric	Foss Fabric	Pin-Dot Velour	Foss Fabric	Foss Fabric
HANDLE STYLE	SURETIGHT 5-Spoke Ships Wheel Handle on PX SURETIGHT 5-Spoke Offset Handle on MG	SURETIGHT 5-Spoke Handle	SURETIGHT 5-Spoke Handle	SURETIGHT 5-Spoke Handle	SURETIGHT 3-Spoke Handle	SURETIGHT 3-Spoke Handle	SURETIGHT 3-Spoke Handle	SURETIGHT 3-Spoke Handle	SURETIGHT 3-Spoke Handle	Single Point Handle	Single Point Handle on PV20 3-Spoke Handle on Plus	Single Point Handle
INTERIOR TYPE	4-in-1 Flex™	4-in-1 Flex™	4-in-1 Flex™	4-in-1 Flex™	4-in-1 Flex™	4-in-1 Flex™/ 6-in-1 Flex™ (Extreme)	3-in-1 Flex™/ 6-in-1 Flex™ (Extreme)	3-in-1 Flex™/ 6-in-1 Flex™ (Extreme)	3-in-1 Flex™	4-in-1 Flex™	3-in-1 Flex™	Gun Only or Dual Flex
INTERIOR LIGHTING	Clearview Wand Lighting	Clearview Wand Lighting	Clearview Wand Lighting	Clearview Wand Lighting	Brightview Lighting	Brightview Lighting	—	—	—	Brightview Lighting	—	—
DOOR PANEL	Premium	Premium	Premium	Premium	Deluxe	Deluxe	Economy	Economy	Economy	Economy	—	—
DEHUMIDIFIER	PEET Dryer	Electric Rod	Electric Rod	Electric Rod	—	—	—	—	—	—	—	—
OUTLET KIT	✓	✓	✓	✓	✓	✓	—	—	—	—	—	—

OWNING A LIBERTY SAFE HAS NEVER BEEN SO EASY!

12 MONTHS INTEREST FREE • ZERO DOWN ON APPROVED CREDIT
FOR ORDERS OVER \$850



With Liberty's 12-month interest-free financing on approved credit, now is the perfect time to protect your valuables with America's best-built safes.

WWW.LIBERTYSAFE.COM/FINANCING

Or visit your local Liberty Safe dealer!

CUSTOMER SERVICE: (800) 247-5625



©Liberty Safe and Security Products, Inc.
Customer Service: (800) 247-5625
Dealer Support: (866) 537-0165
1199 West Utah Avenue, Payson, Utah 84651

All trade names used herein are trademarks or registered trademarks of their respective manufacturers.

WWW.LIBERTYSAFE.COM

P/N: 15915 REV. 1/31/19

Liberty Safe reserves the right to update or change product specs without notice.
Internal dimensions and weights may vary slightly based on the specific materials used in each safe.
For the latest most up-to-date product specs, see our website at www.libertysafe.com